

# T5HO Bypass

Single Ended Bypass  
5 Year Limited Warranty

Frosted Glass  
Single Ended Wiring  
25 Watts  
4000 or 5000K



**LAMP TYPE:** Linear  
**BULB TYPE:** T5 LED  
**BASE TYPE:** G5  
**WATTAGE:** 25W  
**COLOR TEMPERATURE:** 4000, 5000K  
**COLOR RENDERING INDEX (CRI):** >83  
**WARRANTY:** 5 Years



Look for this logo to denote that your fixture or retrofit kit has an industry leading LED T8 Lamp backed by a fifty year old company with hallmarks on reliability, consistency, and performance. If you see this mark, rest assured your lights will operate to specifications every time or we will be there to make it right.

## PRODUCT FEATURES

- Integrated Internal LED Driver eliminates the need for any ballast or Driver in the fixture
- 120V to 277V Universal Voltage operation, 50/60 HZ
- 50,000 +Hour Lifetime
- Environmentally Friendly: No Mercury Used
- Instant Startup
- Frosted Lens Eliminates Pixelation
- Operating Temperature: -20°C to 45°C
- Integral Driver (Non-Isolated), Eliminates the Need for External Driver or Ballast
- Samsung LEDs
- Suitable for Indoor, Outdoor, Enclosed or Open Fixture

## WARRANTY

Standard warranty is 5 years or 50,000 hours.  
For details, visit [www.savegreenlighting.com/warranty](http://www.savegreenlighting.com/warranty)

## LED T5 Lamp Benefits

Savegreen's most popular Single Ended T5HO Lamp is one of the most exciting new LED technologies in an ever changing industry. This lamp provides all the benefits that are making LED so popular without any of the drawbacks. The T5HO lamp fits into most fixtures that were once fluorescent but don't require a ballast which is often the first thing that breaks down. The lamps are wired with Single Ended Power which enables ease of installation, lower cost luminaires and enhanced safety. Rigid glass construction ensures the lamp will never sag and a frosted finish for comfortable, glare free lighting. The lamp requires non-shunted G5 medium bi-pin sockets. This popular lamp provides good lumens per watt with good color and long life for dependable performance, excellent energy savings and trouble free maintenance.

### ELECTRICAL CHARACTERISTICS

- Input Voltage: 120-277Vac
- Power Consumption: 25W
- Power Factor: >0.90
- Input Current: 0.215A UL rated current

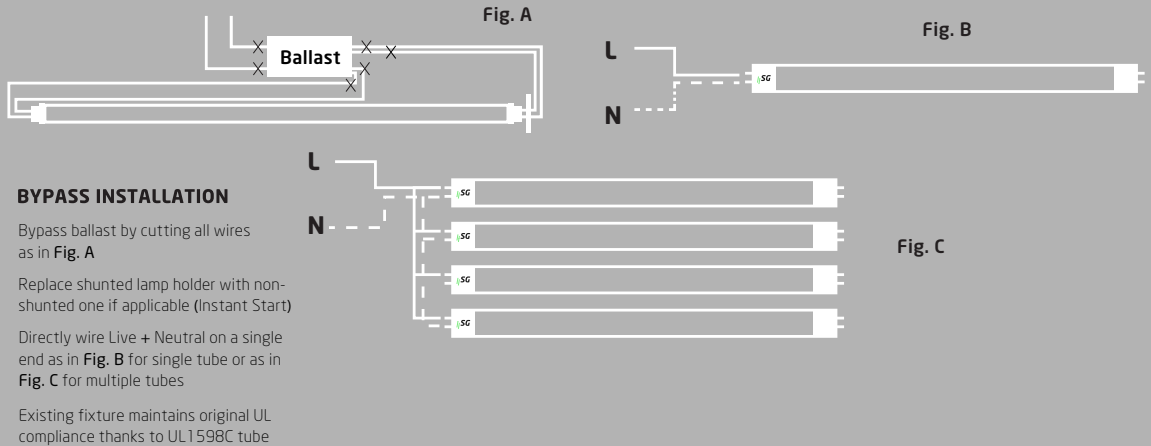


### PHOTOMETRIC CHARACTERISTICS

- Color Temperature (CCT): 4000, 5000K
- Luminous Flux: 3300 lm
- Color Rendering Index (CRI): >83
- Beam Angle: 240°
- Efficacy: 132 lm/w

**ORDERING GUIDE:** LT5BG46L25W3300L40K  
LT5BG46L25W3300L50K

SERIES	LAMP TYPE	WIRING	MATERIAL	LENGTH	WATTAGE/LUMENS	COLOR TEMP
LT Standard	5 T5HO Bipin	B Bypass	G Frosted Glass	46L 46 Inches	25W 3300lm	40K 4000K 50K 5000K



### LAMP ORDER CODES & INFO

ITEM NO.	FIXTURE CODE *	COLOR	WIRING	MATERIAL	WARRANTY	LENGTH	WATTAGE	LUMENS FOR 400K	BEAM	CRI
LT5BG46L25W3300L40K	SGT525W40	4000K	Single Ended	Frosted Glass	5 Yrs	46	25	3300	240	>83
LT5BG46L25W3300L50K	SGT525W50	5000K	Single Ended	Frosted Glass	5 Yrs	46	25	3300	240	>83

\*Add fixture code to end of "Partner's" Fixture item number for this lamp installed in fixture

Consult for T5 & T5HO Savegreen Retrofit Accessories

#### SAVEGREEN RETROFIT ACCESSORIES FOR TB

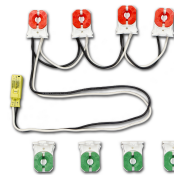


##### Bypass Unshunted Sockets

Specially made sockets designed to identify fixtures utilizing Savegreen and other Bypass Lamps

##### SKTUSMEDRED

Individual Unshunted Medium Red Socket Slide On



UL Listed kit to bypass Fluorescent Ballast w/LED Tubes

Add '8' after RLK for tandem version

To wire for Troffer Retrofit, add 'TR' after 'RLK'

ITEM NO.	COLOR
RLK1X1WR	Retrofit Lamp Kit Prewired Unshunted Sockets for 1 LED T8 Lamp includes companion sockets
RLK2X1WR	Retrofit Lamp Kit Prewired Unshunted Sockets for 2 LED T8 Lamp includes companion sockets
RLK3X1WR	Retrofit Lamp Kit Prewired Unshunted Sockets for 3 LED T8 Lamp includes companion sockets
RLK4X1WR	Retrofit Lamp Kit Prewired Unshunted Sockets for 4 LED T8 Lamp includes companion sockets